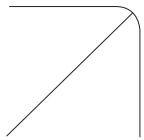


# Aura T8 LED retrofit G2

A high efficient LED replacement for T8 installations



Aura T8 LED retrofit G2 is an efficient light source that can be used as a quick solution to save energy in existing luminaire installations replacing T8 fluorescent

tubes operated by magnetic ballasts. It is possible to safely upgrade the installation to LED technology without any big investments and with minimal effort. Aura T8 LED retrofit G2 is a high efficient LED replacement for T8 installations. It delivers high lumen values and a high efficiency to a low cost, making it ideal for quick upgrades of your old lighting installations.

- **Easy energy savings**
- **Cost efficient**
- **Easy to install**
- **Compatible with magnetic ballasts (with dummy starter)**
- **3 year guarantee**

	TYPE	WATTAGE (W)	LUMINOUS FLUX (lm)	LUMINOUS EFFICACY (lm/W)	LENGTH WITHOUT PINS (mm)	ENERGY CLASS	PCS PER PACK	ARTICLE NO.
PROGRAMME	Aura T8 LED Retrofit G2							
	Aura T8 LED retrofit G2 10W/830 600 mm	10	1000	100	590	A+	20	379003
	Aura T8 LED retrofit G2 10W/840 600 mm	10	1100	110	590	A+	20	379004
	Aura T8 LED retrofit G2 10W/865 600 mm	10	1100	110	590	A+	20	379006
	Aura T8 LED retrofit G2 20W/830 1200 mm	20	1900	95	1200	A+	20	379103
	Aura T8 LED retrofit G2 20W/840 1200 mm	20	2100	105	1200	A+	20	379104
	Aura T8 LED retrofit G2 20W/865 1200 mm	20	2100	105	1200	A+	20	379106
	Aura T8 LED retrofit G2 29W/830 1500 mm	29	2900	100	1500	A+	20	379203
	Aura T8 LED retrofit G2 29W/840 1500 mm	29	3200	110	1500	A+	20	379204
	Aura T8 LED retrofit G2 29W/865 1500 mm	29	3200	110	1500	A+	20	379206

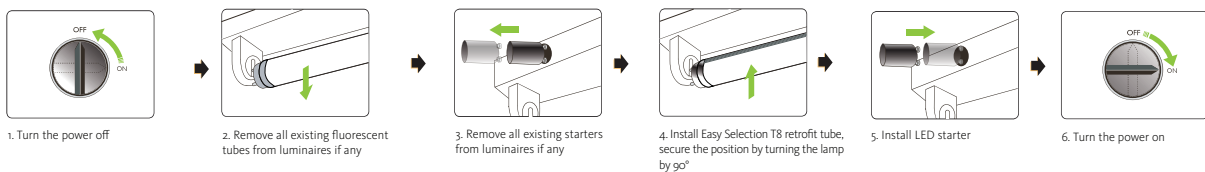
Input	198-264V 50 Hz
Rated lifetime L70B50	40,000 h
Starting time (seconds)	0,5 (max)
Warm-up time to 60% light output	Instant full light
Dimmable	No
Lumen maintenance rated lifetime (%)	70%
Power factor	>0,9
Beam angle (°)	185°
CRI	>80
Initial color accuracy	<6 SDCM
Switching cycles	>40.000
Ambient temperature	-10°C - +30°C
Protection	IP20
Max lamp diameter	28
Base	G13
Material base/tube	Polycarbonate
Weight (g)	155 G (590MM)
	280 G (1200MM)
	355G (1500MM)
Approvals	CE, VDE



Hazard	
Actinic UV	RG 0
Near UV	
Blue light	
Retinal thermal	
Retinal thermal, weak visual stimulus	
IR radiation, eye	
Classification group	

NB: If a power factor compensation capacitor is installed in the luminaire it may remain but it lowers the power factor.  
 NB: Not usable in luminaires with serial lamp connection i.e. more than one tube on one magnetic ballast. In such case luminaire needs to be rewired to parallel lamp connection.

**Easy installation Aura T8 LED retrofit G2**



All specifications subject to change. For the latest version of this product leaflet, please visit [www.auralight.com/products](http://www.auralight.com/products).

2018-09-24